



PYLE PHYLE

**The Online Joint Newsletter
of the Thomas W. Pyle
PTSA & School Administration**

2021-2022

SAVE the DATES

- **Mock Half Day** August 26th 8:15am-12pm
(doors open at 7:50)
- **Back to School Outdoor Welcome Party**
Aug 29th, 5-7pm
- **First day of School** Monday, Aug 30th
- **Back to School Night** Sept 2nd, 7-8:30pm
- **Labor Day** Sept 6th No School
- **Non-Instructional Day** Sept 7th No School
- **PTSA Meeting** Sept 14th, 7pm ZOOM
- **Non-Instructional Day** Sept 16th No School
- **Second 6th Grade Back to School Night**
Sept 23rd, 7-8PM (Sixth Grade Only)
- **Early Release** Oct 8th



What's Inside

- Principal's Letter - 3
- PTSA President & VP Letter - 4
- PTSA Board & Committee Chairs - 5
- Back to School Picnic - 6
- Masks and More - 7
- 6th Grade Welcome - 8
- 7th Grade Welcome - 9
- 8th Graders! - 10
- Pyle Education Foundation - 11
- Directory Info -12
- School Supplies & PE -13
- General Info -14
- Bell Times -15
- Bus Route Info - 16
- Media Center -16
- Parentvue - 17
- FAQ's -18

Publication of the Thomas W. Pyle Middle School Administration & The Pyle PTSA

Thomas W. Pyle Middle School 6311 Wilson Lane Bethesda, MD 20817 | 240-740-3500

www.montgomeryschoolsmd.org/schools/pylems

Principal: Mr. Chris Nardi | Christopher_B_Nardi@mcpsmd.org

Phone Numbers: Main Office: 240-740-3500 | School Fax: 301-320-6647

Counseling: 240-740-3510 | Special Education Office: 240-740-3500

Attendance: PyleAbsences@mcpsmd.org

Pyle Phyle Editor & Designer: Erin McCahill

LETTER FROM



OUR PRINCIPAL

Welcome to the 2021 2022 school year!

I hope this newsletter finds you all enjoying the last weeks of summer. To help you prepare for the upcoming year, in this newsletter, you will find a good deal of information, tips and upcoming events that may interest you. The start of this school year is like no other as we will be returning to full, in-person classes. We are excited and look forward to this return to familiar schedules and routines.

Each year brings turnover in staff, and this year ten new people have joined our ranks. We also welcome Mrs. Michelle Harmon who will be our new Assistant School Administrator overseeing 7th grade. Mrs. Harmon has been at Pyle for many years, and her most recent position was as the English Resource Teacher.

We are looking forward to a wonderful start to school and a return to some normalcy. All of our staff are working hard to prepare for the upcoming school year, and we are looking forward to welcoming all of our students, in-person on Monday, August 30th. It will be great to see everyone. Please be advised that all students and staff will be required to wear a mask while in the building, regardless of vaccination status.

Middle school is a time of great transition for our students. We want to ensure that those transitions are met with support and guidance from our staff. Supporting our students' academic and social emotional growth is our focus at Pyle. We work to help our students demonstrate a passion for learning and honor the diversity of our school community. We expect our students to respect the many different cultures, races, gender identities and religions represented within our school, which is at the heart of having good character. Our students' involvement in school and kindness toward each other is what makes Pyle such a unique place. We will continue our work to maintain a respectful and nurturing school culture, and our students will rise to the occasion.

Please put the following dates on your calendar. First, Thursday, August 26th is the Student Mock Day. From 7:50-11:55 we are inviting all students grade 6 - 8 to join us for an optional, mock half-day. Throughout the morning, students will have the opportunity to walk their schedules, meet their teachers, and get oriented to the building. We encourage all 6th graders to come to this optional, half-day event. The orientation is also open to any 7th or 8th grade students who would like to come, with a special focus on incoming 7th and 8th grade students new to Pyle and students who were entirely virtual last year. This is also an opportunity for students to learn their bus schedule as buses will run on the half day (bus routes will be posted on the Pyle website under "School Information"). Students who are unable to attend will participate in many orientation and team building activities during the first two weeks of school.

We will also be holding a Chromebook distribution for New Students and students who were entirely virtual last year on Tuesday 8/24 from 10-2:00 pm and Wednesday 8/25 from 10-2:00 pm. You will come through the pick-up/drop-off lanes. You will need your child's student ID number.

On Thursday, September 2nd, we will hold our Back to School Night in-person. We will share more information closer to that date. During that evening, you will be able to meet teachers, learn about our programs, see friends and neighbors and chat with administrators. We love seeing parents and welcome your involvement.

The PTSA has planned for a Back to School Picnic. It will be on Sunday, August 29th from 5-7PM on our blacktop and back fields. There will be food trucks, music and a DJ. It is great opportunity to meet old friends and make new ones.

Our parent community is very supportive of our work, and that, combined with the dedication of our teachers and other staff members, is what makes Pyle a special place to learn and grow. I hope that you will join the PTSA and get involved in its work when you can; the PTSA and the Pyle Education Foundation are significant supporters of the educational programs for our students and to the environment at Pyle, which enables our students to thrive.

I look forward to our continued partnership as we come together to support the children and create an excellent middle school experience for all. Thank you for trusting us with your children. We are all looking forward to the start of another great year!

Do Good and Be Good,

Chris Nardi

Principal
Thomas W. Pyle Middle School



THOMAS W. PYLE  **MIDDLE SCHOOL**

LETTER FROM OUR PTSA PRESIDENT & VP



On behalf of our Pyle PTSA, we welcome you to our 2021-22 school year! We couldn't be more excited to begin this year **in person** and start to return to some of our traditional events like our BTS picnic, in person speaker events, teacher appreciation lunches and so many other ways that we can bring our community together. Although this year may still be a little different with safety protocols in place, we are hopeful and determined to create a special year for students, teachers and staff who have the privilege of walking the halls of our beautiful and newly renovated school.

A SPECIAL THANK YOU to our 2020-21 PTSA Board Members and Committee Chairs who did an amazing job finding ways to support our teachers, staff and students while keeping everyone safe during our time at home this past year. Pyle MS would not be the strong community it is without the endless hours our volunteers put in each and every year. Please take a look at our website to see the new 2021-2022 Executive Board and Committee Chairs and reach out to us with any questions or possible interest in getting involved.

PTSA Membership is vital to our success as a school community! The \$40 family membership fee is our primary source of income and helps to fund professional speakers, teacher appreciation lunches, wellness initiatives for students, Panther Programs, landscaping and other many other school-based programs and events. In addition, your PTSA membership gives you access to our Pyle Directory (In printed form and via the website/app!)

We need your support! While you are online joining the PTSA, there is also the option to include an additional tax-deductible donation(s). Through PTSA membership and additional donations we are able to fund all of our planned programs and activities without having to conduct additional fundraising events. For more detailed budget information, we will be reviewing and approving the annual budget at our first General Membership PTSA meeting on September 14th.

NEW THIS YEAR: Please go to the next page called "Pyle AtoZ Connect via **Membership Toolkit Info.**" It includes important info for **ALL PYLE PARENTS - returning and new.** PYLE AtoZ Connect via Membership Toolkit serves as our Pyle Directory, Pyles PTSA email listserve, Pyle volunteer sign-up, and Pyle PTSA Store (membership/donation/extra directory sales).

Lastly, the PTSA always welcomes your suggestions and support. Please reach out to us with questions or ideas as we begin to navigate our way through this new, challenging and EXCITING school year!

Fondly,

Katy & David

Katy Greenberg & David Filbeck
Pyle PTSA President & Vice President
president@pyleptsa.org / vicepresident@pyleptsa.org

The Pyle PTSA Needs You!

**JOIN
NOW**

<https://pyleptsa.membershiptoolkit.com>

THOMAS W. PYLE MIDDLE SCHOOL

2021/22

PTSA BOARD of DIRECTORS

- President
- Executive Vice President
- Treasurer
- Recording Secretary
- Corresponding Secretary
- Co-VP of Volunteers
- Co-VP of Volunteers
- VP of Membership (Recruitment & Dues)
- VP of Membership (Directory)
- Co-VP of Programs
- Co-VP of Programs
- VP of Social Media
- Co-Whitman Cluster Representative
- Co-Whitman Cluster Representative
- Co-MCCPTA Representative
- Co-MCCPTA Representative
- Ex-Officio

Katy Greenberg
David Filbeck
Heather Farrell
Marisol Blanchard
Molly Kress
Meri-Margaret Deoudes
Valquiria Rey
Britt Pratt
Meg Press
Nina Kutty
Kelley Freeman
Dana Cruz
Marget Maurer
Michael Lewis
Debra Budiani-Saberi
Sheila Bruch
Rochelle Fink

president@pyleptsa.org
vicepresident@pyleptsa.org
treasurer@pyleptsa.org
recording_secretary@pyleptsa.org
corresponding_secretary@pyleptsa.org
vpvolunteers1@pyleptsa.org
vpvolunteers2@pyleptsa.org
vpmembership_recruitment@pyleptsa.org
vpmembership_directory@pyleptsa.org
vpprograms1@pyleptsa.org
vpprograms2@pyleptsa.org
vpsocialmedia@pyleptsa.org
clusterrep1@pyleptsa.org
clusterrep2@pyleptsa.org
mccptarep1@pyleptsa.org
mccptarep2@pyleptsa.org
ex_officio@pyleptsa.org

COMMITTEE CHAIRS

- Amazon Smile
- Welcome Buddy Program
- Counseling Office (2)

- Gifted and Talented

- Landscaping

- Main Office Volunteers
- Media Center Volunteers
- NAACP Representative
- Pyle Phyle
- Website Editor
- Pyle After School Programs (2)

- Safe Stops and Routes
- Special Education (2)

- Staff Appreciation
- Winter Appreciation
- Wellness (2)

Julie Lane
Laura Hodgson
Betsy Dodson
Stephanie Wolf
Becky Trent
Jackie Meirer
Melinda McLaughlin
Sarah Taylor
OPEN
Achie Mah
Ron English
Erin McCahill
Joanne Mao
Aiyng Shen
Yan Xu
OPEN
Reem Shalabi
Christine Davis
Felicia Kolodner
Liz Katsaros
Caree Oslislo-Wizenberg
Jen Rampulla

juliewernerlane@gmail.com
laurahodgson5917@gmail.com
wallyrules@verizon.net
stephanieswolf@gmail.com
mmetrete@gmail.com

melindamc@yahoo.com
sktaylor1@yahoo.com

Achie.mah@gmail.com
ronald.english@gmail.com
erin.mccahill@gmail.com
zhijuan@gmail.com
aiyingshen@gmail.com
yanxuca@gmail.com

reemshalabi@hotmail.com
davischristine@yahoo.com
feliciasdt@yahoo.com
elizabethkatsaros@gmail.com
coslislo@comcast.net
jenrampulla@hotmail.com



THOMAS W. PYLE MIDDLE SCHOOL

PTSA BACK TO SCHOOL PICNIC

SUNDAY AUGUST 29TH
5-7PM

6311 WILSON LANE

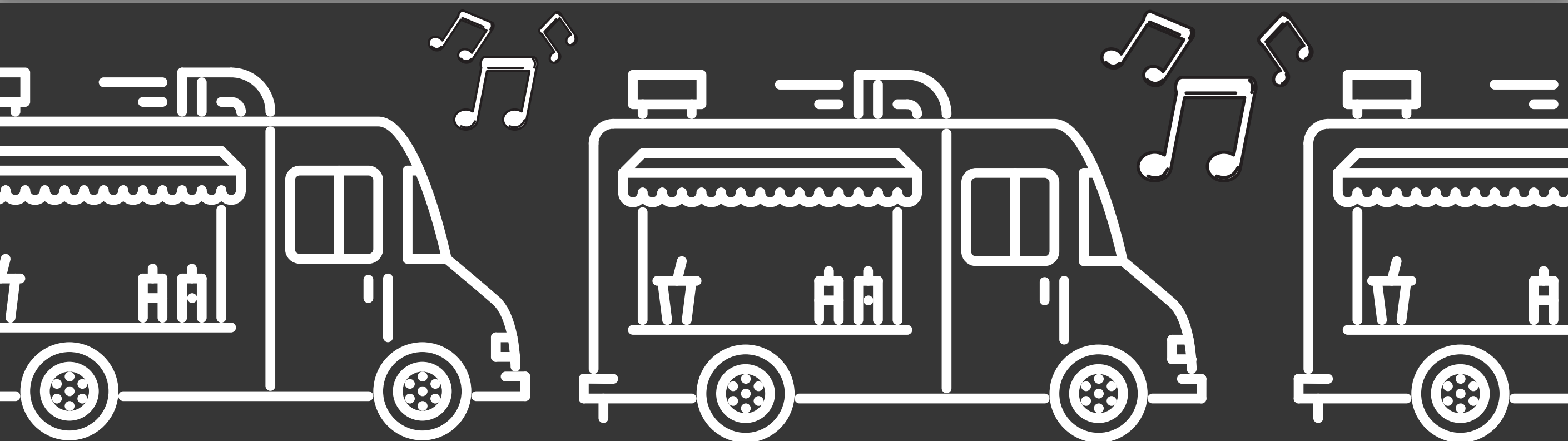


Welcoming ALL grades this year!
6th, 7th & 8th

SAY HI TO OLD FRIENDS & MAKE NEW ONES!
MUSIC, FUN, FOOD TRUCKS & MORE

- Parking is limited, please walk when available
- Rain date is September 12th
- SSL hours available for older siblings in 9th - 12th grade

Email KelleyFreeman@Yahoo.com
directly for more SSL information






MORE SOON



INFORMATION
COMING SOON
ABOUT: LOCKERS,
HOMEROOMS &
PARENT / TEACHER
CONFERENCES



Please be aware that MCPS has shared that all students and staff will be required to wear masks in school buildings this fall regardless of their vaccination status. Students will be required to wear masks on the school buses, as well. Face coverings are not required outdoors but are strongly recommended for unvaccinated individuals.

We have posted Back to School information to our website.



MASK POLICY

Please use this link to get to the information.

<https://www2.montgomeryschoolsmd.org/schools/pylems/>

Welcome!

PYLE 6TH GRADERS

Whitman Class of 2028

The three sixth-grade teams **All-Stars**, **Rock Stars**, and **Superstars** would like to welcome our new sixth graders to Pyle! By now, most of you have been through summer orientation. You should have had the opportunity to tour the school and even practice opening a locker! When you return in August, we ask that you have your supplies in hand, ready to go. Your teachers will explain how binders and dividers need to be set up. Please don't stress about this before school starts! This year all school supplies may be bought on Amazon using [this link!](#) Although you do not have to buy supplies here we recommend at least buying the binder.

All students will receive a **Pyle Plan Book** on the first day of school. The plan book is where all homework assignments will be written down.

Our goal is to help all sixth graders make a smooth transition from elementary to middle school. We will work hard to provide each student with a challenging and motivating academic program. We have several special events lined up to help parents understand and get acclimated to the expectations at Pyle. Please plan on attending the following important programs:

Back to School Night: Thursday September 2nd at 7pm. This is a wonderful time for you to meet the teachers. Each teacher will briefly outline his/her curriculum and discuss the grading and homework policy for each class.

This year, your child will be expected to learn (and follow) a specific organizational system. To ensure success it is vital for you to learn this system as well. We invite you to visit your child's teachers on **Back to School Night Part 2:** Thursday **September 23rd, 7-8pm**.

During this presentation, the teachers will focus on strategies that will help your child succeed in middle school. We will also provide more in-depth information about organizational expectations, classroom procedures, and study skills. Please bring your child's binder to the meeting, as we will also explain how binders should be organized. More information to come!

EVER WONDERED HOW TO STUDY?

Students and parents are encouraged to come to this year's **Study Strategies Program** on **October 14th from 6:30-8:30pm**. Breakout sessions will focus on general study strategies, as well as subject specific ones. Please plan on attending this highly informative evening with your child.

All the 6th grade teachers wish you a wonderful rest of your summer. We are excited to meet the new sixth graders and look forward to a fantastic year!

We are so psyched to meet you!

WELCOME BACK!

INCOMING 7TH GRADERS

The 7th grade teachers are excited to start another school year! We can't wait to welcome all of our students back and help you get reacclimated to school life. You will receive your 7th grade class schedule on the first day of school. Check your 9th period class to find out what team you are on:

- 9th Period - "Golden" - Voyagers
- 9th Period - "Reilly" - Challengers
- 9th Period - "Enderle" - Trailblazers

Your grade level counselors are: Mr. Stakem, Ms. Huck, and Ms. Best.

We want to let you know that this year we will sell 7th-grade team t-shirts. All 7th-grade shirts will look the same but will have a special delineation as to your team. A flyer will be sent home in the first weeks of school.

Your teachers have been working this summer on plans to support you in your transition back to in-person learning. Here is a list of tips:

- **Utilize your Pyle planner** - Recording your assignments and their due dates is essential in tracking and taking ownership of your learning. Teachers will continue to post homework assignments on MyMCPS Classroom, but this should be used as a secondary resource. Learning to track your assignments is an essential life skill. When teachers go over homework assignments in class, always record them in your planners.
- **Complete homework the night it is assigned** - To take advantage of our block schedule, it is important to begin homework the day it is assigned. That way, if you need help, you have time to seek out the support you need.
- **Visit teachers during Panther Pause** - Panther Pause is a daily 25-minute period for seeing teachers, studying, and completing social-emotional learning activities. When you have questions about homework or need to retake an assignment, get a Panther Pass to spend the period with that teacher.
- **Check your grades twice a week** - All grades are posted on Synergy, so you should always know how you are doing in your classes. Check in twice a week to make sure you don't have any assignments graded "Z". A "Z" means the assignment is missing but can be turned in.

We are so excited to meet you all...
See you soon, 7th graders!

-The 7th Grade Team



8TH GRADE



Dear Pyle 8th Grade:

Welcome to the 2021-2022 school year. We hope you are enjoying a wonderful summer and also hope you are relaxed, recharged, and ready to start the new school year. We are delighted that you are part of Pyle's amazing learning community and look forward to welcoming you back to our classrooms as we start the school year.

The beginning of the school year is an exciting, celebratory time, but we must acknowledge that it has been a while since we were in school-mode. The first day of school, August 30th will be here soon. It will take time to get back into the routine of school, such as maintaining a school-time sleep schedule, being more organized and efficient with your time, and spending some time each day reading a book you enjoy. Starting these routines early will help you ease back into the routine of school.

As your 8th grade teachers, we are committed to partnering with all members of our school communities to ensure safe, healthy spaces that affirm the identity of each and every student, leveraging the assets they bring. We do this in service of safe, welcoming spaces in which all students can learn.

To all our student communities and families, we welcome you to what we expect will be your best school year.

Your 8th Grade Teachers and Administrator



THE PYLE EDUCATION FOUNDATION



ENHANCING YOUR STUDENT'S PYLE EXPERIENCE

Welcome to the 2021-2022 school year!

The Pyle Education Foundation (PEF) Board looks forward to its continued support of our academic community, during the upcoming school year. The PEF Board is made up of Pyle parents and Principal Nardi. Current members include myself, Sara Vogelhut, Shannon Buskirk, Marysol Cummings, Najiyah Khan, Betsy Megary, Courtney Dorning, Stephanie Mantelmacher and Lindsey Markwood.

With your help, despite the unprecedented nature of the 2020-2021 academic year, the PEF funded a variety of projects that enhanced the educational experience of Pyle students, including:

- Dry erase boards and markers for the entire student body, to facilitate virtual education at home
- Hand sanitizer stations (bulk purchase of sanitizer, dispensers and stands) for the spring return to in-person learning
- Materials for 6th graders' virtual Outdoor Education program
- Choral Accompanist to facilitate virtual choral instruction
- Zoom membership to enable community involvement in PTSA and Counseling Advisory Committee (CAC) meetings
- Professional training for a new engineering teacher on Project Lead the Way (PLTW) engineering curriculum
- American School Counselor Association (ASCA) attendance for school counselor

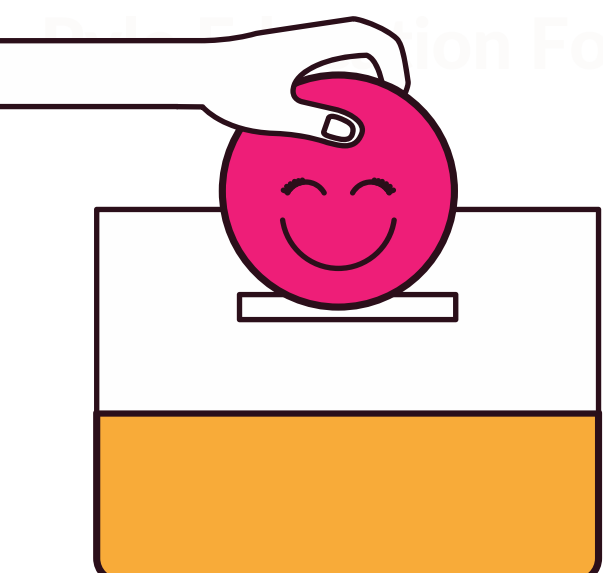
The Foundation strives to touch every aspect of student life at Pyle. Please look out for the fall fundraising mailing in the coming weeks. We hope we can count on your continued support of the PEF, as the foundation realizes its goal of enhancing our children's educational experience during their years at Pyle.

Regards,

Elena Naum

President, Pyle Education Foundation

Congratulations to Pyle for being honored as a "National School of Character" by Character.org. We are the only school (K-12 and public/private) in the state of Maryland to earn this impressive designation last year. Thank you to Mr. Nardi and to his fantastic faculty and staff!



DID YOU KNOW THAT THE PYLE EDUCATION FOUNDATION SPENDS ABOUT \$50,000 EACH YEAR TO PROVIDE OUR CHILDREN WITH PROGRAMS AND SERVICES NOT COVERED BY THE MCPS BUDGET?



THERE IS A DIRECTORY



AtoZConnect

Pyle AtoZConnect via Membership Toolkit serves as our Pyle Directory, Pyle PTSA email listserv, Pyle volunteer sign-up, and Pyle PTSA Store (membership/donation/extra directory sales.)

NEW: Because AtoZConnect is now partnering with Membership Toolkit, ALL Pyle parents (RETURNING AND NEW) need to create NEW accounts as "New Users" to access everything.

Please follow these instructions:

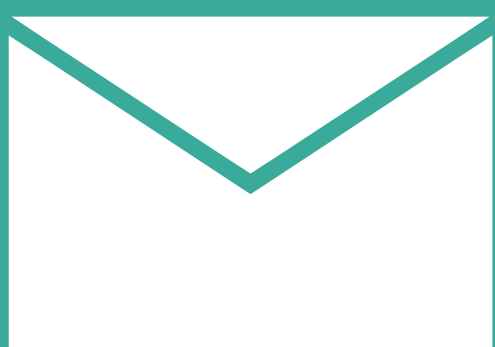
1. Via a web browser, go to <https://pyleptsa.membershiptoolkit.com/> (always go here for access!)
2. Click on the big "Register/Login" button
3. Click "Create Account" under "New User"
4. Follow these instructions based on your status:
 - **For returning Pyle parents:** Enter the same email address that you used last year in our Pyle Directory and via Pyle AtoZConnect. You'll have to enter a new password, but your data has been transferred.
 - **For incoming 6th grade parents from Pyle's feeder elementary schools:** Enter the same email address that you used last year at your respective elementary school. You'll have to enter a new password, but your data has been transferred.
 - **For completely NEW parents to Pyle and to MCPS:** You will create a completely new account.
5. Verify your email address: You will receive an email from "Pyle AtoZConnect via Membership Toolkit" in your email inbox. If you don't see it in your main inbox, check your spam/junk/promotions folders.
6. Confirm "Your Family Info for Pyle" and set your "Directory Publish Preferences."
7. Please go to the Menu, then click "Pyle PTSA Store & Membership Dues" to pay your annual Pyle PTSA Family Membership Dues via any credit card or PayPal.
8. If you want to access your new account via your cell phone also, download the free "**Membership Toolkit**" app via the App Store or Google Play. (The old AtoZConnect app will retire so you can delete it.)



Pat yourself on the back because you just followed Principal Nardi's favorite motto:

"Do Good, Be Good!"

Questions? Email us at: pyleatozconnect@gmail.com



GET YOUR SCHOOL SUPPLIES

You can order your school supplies through Amazon Smile:

https://www.amazon.com/hz/wishlist/ls/2DXB4ARYUM8ZN?ref_=wl_share

School Supplies

Below is a list of suggested and required school supplies for Pyle students. Individual teachers may request additional items to meet specific program needs.

All students are issued a Planbook at no charge during the first week of school. If the original Planbook is lost, the replacement cost is \$5.00 and will be available from the main office.

All students are required to use the Pyle Planbook



Required

- 3 inch Loose-leaf binder
- Loose-leaf paper
- Plastic notebook dividers (7 subjects)
- Standard backpack (roller backpacks do not fit in lockers)
- #2 pencils (*extra lead if using mechanical pencil*)
- Highlighters
- Pens (*2 different colors, red & black for example*)
- Earbuds (inexpensive) for pencil pouch
- Pencil holder—preferably zipper style
- Calculator (**wait until you meet your math teacher to buy your calculator**)
- Pyle Planbook (**will be passed the first week of school**)

P.E. UNIFORMS

PE attire consists of black shorts and a red shirt or students may wear athletic PE clothing from home that meets our recommendations.

Students may wear any color sweatshirt or sweatpants when the weather is cold. It is strongly recommended that students have a change of clothes and athletic shoes for PE for their safety and personal hygiene.

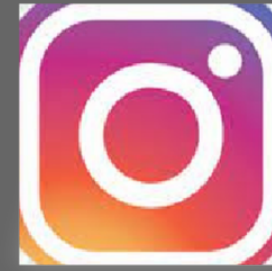
You can show your school spirit with Pyle gear. It is not required for PE! The Physical Education department will talk with the students about PE attire when school begins. Any red shirt, black shorts and sneakers are all that is needed for PE.



JOIN US ON SOCIAL



@officialPyleMSBethesdaMD



pylemsbethesda



@Pyle_Principal
@PyleMSAthletics



VISIT OUR WEBSITE

<https://www2.montgomeryschoolsmd.org/schools/pylems/>

- **Join the PTSA**
<https://pyleptsa.membershiptoolkit.com>
- **Check Bell Times**
- **Know Homeroom Teachers (coming soon)**
- **Check Bus Routes Online**
- **Get Ready for a Great Year!**



We will also be holding a **CHROMEBOOK DISTRIBUTION** for New Students and students who were entirely virtual last year only on **Tuesday 8/24 & Wednesday 8/25** from **10 am-2:00 pm**. You will come through the pick-up/drop-off lanes. You will need your child's student ID number.





2021-2022

BELL TIMES

Daily Bell Schedule

Times	Even Day	Odd Day
8:15-9:00	Period 1	Period 1
9:00-9:10	Interact	Interact
9:10-9:40	Panther Pause	Panther Pause
9:45-11:15	Period 2	Period 3
11:20-1:20 <i>Lunch 1 11:20-11:50</i> <i>Lunch 2 11:50-12:20</i> <i>Lunch 3 12:20-12:50</i> <i>Lunch 4 12:50-1:20</i>	Period 4	Period 5
1:25-2:55	Period 6	Period 7

2-hour Delay Bell Schedule

10:05am	Building Opens for Students
10:15 am - 10:45 am	Period 1
10:50 am -11:15 am	Period 2/3
11:20 am -1:20 pm	Period 4/5 & Lunches
1:20 pm - 2:55 pm	Period 6/7

Early Release Bell Schedule

8:05 am	Building Opens for Students
8:15 am - 8:50 am	Period 1
8:55 am - 9:40 am	Period 2/3
9:45 am - 10:25 am	Period 4/5
10:25 am - 12:25	Period 6/7 & Lunches



OTHER IMPORTANT INFO



Bus Routes

<http://www.montgomeryschoolsmd.org/departments/transportation/busroutes>



Media Center

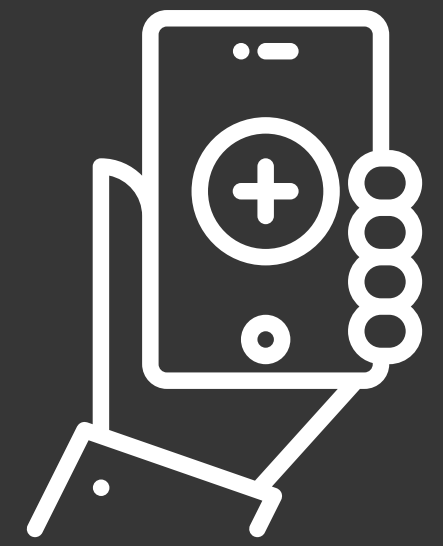
OPEN M-F, 7:50am -3:05pm



Students are welcome to stop in during class times with a pass from their teacher, between classes, and during Interact.

Students can come to the media center during TAG with a pass. TAG passes are available in the media center only during Interact the day of.

Students can also come into the media center during lunch with a pass from the cafeteria monitor.



THE PARENT PORTAL THERE IS AN APP FOR THAT

Montgomery County Public Schools (MCPS) utilizes a student information system called Synergy. The parent component of Synergy is known as ParentVUE. This innovative online tool provides near real-time access to information on assignments, scores, attendance, class schedules, transcripts, graduation status, and more. You may access ParentVUE online, but for the best mobile experience, we encourage you to download the ParentVUE App from the Google Play Store or Apple Store.

As a ParentVUE user you will also enjoy the convenient ability to submit online forms, submit emergency card information, register for athletics, apply to special MCPS programs, and communicate easily with teachers and staff.

Here are some [great videos](#) that will help you get started.



WATCH VIDEO



ANSWERS TO

FREQUENTLY ASKED QUESTIONS



What should I do if my child is going to miss school or has missed school?

- Email your student's name, grade and reason for absence to pyleabsences@mcpsmd.org on the day your child is going to be absent
- A doctor's note is required when a student is absent for five days or longer

What do I do if my child is getting picked up early?

- If a student needs to leave school early, a note signed by a parent / guardian should be brought to the Attendance Secretary at the beginning of the school day.
- The note should include the student's full name, grade, parent's / guardian's home, office, or cell phone number, the date, time, and reason for early dismissal.
- The student will get a pass to leave class.
- Before leaving school, students must sign out in the Main Office.
- Students may not leave school grounds without permission.
- A student without a note will be released only to the parent / guardian or emergency contact listed on the Emergency Information Card.
- Please try to avoid making appointments for your child during the school day, especially on testing days.

What if the school closes due to bad weather or another issue?

- In the event of delayed opening, schools will open two hours late and buses will run accordingly.
- If there is an early dismissal school will close 2 1/2 hours early and buses will run accordingly.

Does my child have an assigned school counselor?

- Yes, school counselors are assigned according to grade and team.
- As students progress through Pyle, their counselors progress with them.
- Counselor grade and team assignments can be found in the school directory or by contacting the **counseling office at: 240-740-3510**.

When and how should a parent contact a teacher?

- Anytime a parent has a question or concern about a class it is best to contact the individual teacher first.
- Teacher email addresses can be found on the Pyle website under Staff Directory.

Who are the team leaders and what do they do?

- Each grade at Pyle is divided into three teams, each with its own team leader.
- Most students take classes only from teachers on their assigned teams, although cross scheduling occurs due to scheduling needs or in the case of certain classes such as electives.