



# The LuxLetter

A Publication of the Luxmanor PTA

October-November 2021 Issue

## The LuxLetter

Is published monthly during the school year by the Luxmanor PTA

\*\*\*

### Principal

Ryan Forkert

### Assistant Principal

Jason Scott

### PTA President

Marcie Sun

### PTA President-Elect

### Newsletter Editors

Sarra Soussi Ghanoudi

### Submissions Deadline

The 20<sup>th</sup> of every month.

E-mail submissions to ptaluxletter@gmail.com

\*\*\*

Luxmanor Elementary School

6201 Tilden Lane  
Rockville, MD 20852

240-740-0820

## Letter from the PTA President

Dear Luxmanor Families!

Welcome Back to School! What an exciting year this will be! I must admit, while watching my daughter get onto the bus the first day, I was very emotional. It has been a year and a half none of us could have imagined and I am so thankful for our children being in school that I want to start with a few messages of appreciation.

First of all, thank you to the phenomenal and dedicated staff at Luxmanor - I know it is because of their hard work and dedication to make sure that our children can return to in-person learning in a safe and welcoming environment. I know it has not been easy, and I thank you from the bottom of my heart. I also want to thank all of the board members and community members who have already begun the word of supporting our school this year - I am honored to do this work with you.

While we have an amazing group of volunteers currently serving on the board, there are always ways that we could use your help! There are many opportunities to volunteer with us from open board positions (President-Elect, Vice President, MCCPTA Rep), to committee chairs and volunteers. Committees include communications, membership, Teacher Appreciation Week and International Night. We are also looking for volunteers to help in other ways such as plan our dine-outs, be a cluster representative and much more. I am often asked what the time commitment is, and I truly believe it is whatever time you can give. We all can do our part of the puzzle, no matter the time we have, and all of our puzzle pieces come together to make PTA what it is. To volunteer, please click on the link below.

<https://bit.ly/PTAVolunteer21-22>

## What's Up This Month

### November 4

The Scholastic Book Fair

As a PTA we are always open to ideas, and would love to hear from you! We can be reached at [PTALuxmanor@gmail.com](mailto:PTALuxmanor@gmail.com). Please also make sure to stay in touch with us by:

Joining our listserv (Visit <https://groups.io/g/luxmanorpta> and select +Join This Group and enter your email to be used for the listserv.)

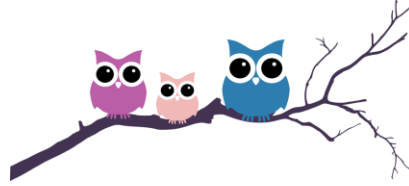
Joining us on Facebook! Join *both*!!!

- Public FB page: [facebook.com/LuxmanorPTA](https://www.facebook.com/LuxmanorPTA)
- Private FB Group: [facebook.com/groups/LuxmanorPTAGroup](https://www.facebook.com/groups/LuxmanorPTAGroup)

With that, I want to share a quote from Coretta Scott King, "*The greatness of a community is most accurately measured by the compassionate actions of its members.*" I know our community is amazing, let's work together to support our incredible staff and school!

Best,  
Marcie Sun,  
PTA President

# What's Up This Month



## November 4

The Scholastic Book Fair

### PTA Board of Directors 2020-2021

<u>Office</u>	<u>Office Holder</u>	<u>Email</u>
President	Marcie Sun	marciefsun@hotmail.com
President Elect	<i>Accepting volunteers!</i>	
Vice President	<i>Accepting volunteers!</i>	
Treasurer	Ana Maria Sanchez	luxmanorptatreasurer@gmail.com
Recording Secretary	Natalie Shelton	nshelton@pobox.com
Corresponding Secretary	Jenna Burka Hammer	burkaj@gmail.com
MCCPTA Rep.	<i>Accepting volunteers!</i>	
MCCPTA Delegate	Mickie Chandra	mchandra.pta@gmail.com
Diversity Chair	Sarra Soussi Ghanoudi	ptaluxletter@gmail.com
Membership Chair	Paula Warnsman	pjkim5@yahoo.com
Communications Chair	Danielle Davis	Davisdanielle67@gmail.com
Principal	Ryan Forkert	ryan_d_forkert@mcpsmd.org



## Greetings from your new school counselor,

My name is Binish Shingari and I am so excited to be the new counselor at Luxmanor! This is my fourth year as a counselor. Before coming to Luxmanor, I was a counselor at Capt. James Daly ES and at Waters Landing ES. I hold a B.A. in Psychology from the University of Maryland and a M.Ed. in School Counseling from Loyola University. I live in Rockville with my husband, my 5-year-old son, and my 5-month-old son. I love spending quality time with my family and traveling to new places. My core values are empathy, gratitude, and respect.

As a professional school counselor, I design and deliver a comprehensive school counseling program. I lead, advocate, and collaborate to promote equity and access for all students. My school counseling program focuses on student's academic, social/emotional, and career development. I conduct preventative and responsive individual counseling sessions, group sessions, and classroom guidance lessons. My goal is to connect with all students and build a strong rapport.

My counseling mission is to deliver a comprehensive school counseling program that addresses students' academic, social/emotional, and career goals through a partnership with parents/guardians, staff, and community members with the goal of enabling all students to become successful, productive, and lifelong learners in a diverse and changing world.

My counseling vision is that every student will be offered the support they need to thrive and realize their full potential in academic, social/emotional, and career aspects.

I hope to cultivate strong relationships with everyone at Luxmanor!

Best Wishes,  
Binish Shingari  
Professional School Counselor  
240-740-0827

## Volunteering at Luxmanor

Dear Luxmanor Families,

We are excited to bring back parents who would like to volunteer in school! The school system has a few requirements for anyone who would like to volunteer. Below are two steps volunteers will need to complete prior to volunteering in school.

### **New Volunteers:**

1. Complete the online Recognizing Child Abuse and Neglect Training via your myMCPS Classroom/Canvas account.
2. Complete the COVID-19 Vaccination Attestation

### **Current Volunteers:**

1. Complete the COVID-19 Vaccination Attestation

Volunteers need to take the Recognizing Child Abuse and Neglect training every three years. If you took the training during the 2019-2020 school year or before, you will need to take the training again. Directions for how to access the volunteer training can be found [here](#). Page 8 of this guide provides instructions on how to complete the COVID-19 Vaccination attestation and how to upload your vaccination certificate.

Once these requirements have been met, our staff will be able to have volunteers return to their rooms, as needed, to assist in the classroom or in other areas of the building. The new vaccination portal opened today. The school system will update the volunteer list on October 1<sup>st</sup> for individual schools listing those volunteers who have completed both steps.

Please don't hesitate to contact our main office if you have any questions.

Sincerely,

Ryan D. Forkert  
Principal  
Luxmanor Elementary School  
240-740-0820

Maryland's Largest School District

## MONTGOMERY COUNTY PUBLIC SCHOOLS

Expanding Opportunity and Unleashing Potential



Bullying, harassment (including sexual misconduct and sexual harassment), intimidation, hazing, incidents of hate-bias, and concerning issues involving student gender identity are not tolerated in MCPS. We are committed to ensuring our students feel safe, valued, and respected in our schools. Please see the multiple ways you can file a report below.

To file a Bullying Form online, click [HERE](#)

To file a Child Abuse & Neglect Form online, click [HERE](#)

To contact the MCPS Title IX Coordinator, click [HERE](#)

### How You Can Report

- ✓ Contact school principal, counselor, student welfare liaison, or any MCPS staff member.
- ✓ Contact the Montgomery County Police Department, 301-279-8000.
- ✓ Submit [MCPS Form 230-35, Bullying, Harassment, or Intimidation Reporting Form](#).
- ✓ Contact the **MCPS Title IX Coordinator** at [TitleIX@mcpsmd.org](mailto:TitleIX@mcpsmd.org). Reports and allegations concerning MCPS employees will immediately involve the Department of Compliance and Investigations. They can be reached at [DCI@mcpsmd.org](mailto:DCI@mcpsmd.org).
- ✓ [Safe Schools Maryland Tip Line](#) is an anonymous reporting system used to report threats to the safety and/or well-being of students. Call 1-833-MD-B-SAFE or download the App.
- ✓ Contact the [Victim Assistance and Sexual Assault Program \(VASAP\)](#) for support. VASAP provides information, referrals and advocacy, as well as crisis and ongoing counseling for victims of sexual assault.
- ✓ Contact the **Montgomery County Hotline** at 240-777-4357. A trained staff member or volunteer will provide supportive listening and information, 24 hours a day, seven days a week.
- ✓ Send a text to **EveryMind** hotline telephone number, 301-738-2255, daily between noon and midnight.
- ✓ Use the MCPS Student Reporting Phone Application (*Currently In Development*)

# *The Scholastic Book Fair is back!*

*November 1st through November 5th*

*In the Luxmanor gym*



- Students will visit the book fair with their classes Monday through Wednesday, and are welcome to return on Friday with their teacher's permission. Reminder, there is no school on Thursday November 4th.
- Due to Covid-19, there will be no parent shopping or teacher read- aloud this year.
- We will be looking for volunteers to help out during class visits, open shopping on Friday, and for set-up and take-down. Please keep an eye out on the PTA Listserve for volunteer opportunities!
- If you have any questions, do not hesitate to contact the Book Fair committee at [luxmanorbookfair@gmail.com](mailto:luxmanorbookfair@gmail.com).

*The goal of the book fair is that every child leave with a book. If you are a family with a financial need, please contact the guidance counselor, Mrs. Shingari ([Binish\\_Shingari@mcpsmd.org](mailto:Binish_Shingari@mcpsmd.org)) for a voucher.*



## Stay updated on Luxmanor news and events!

Hello Luxmanor!

1) We have moved our email listserv from Yahoo to Groups.io, a newer email list provider. The reasons are many, but Yahoo no longer offers support for any groups. Groups.io offers better features and is easier to use.

To access the new site, please go to:

<https://groups.io/g/luxmanorpta>

Please select **+Join This Group** and enter your email to be used for the listserv."

2) "Like" & follow the public Luxmanor PTA page on Facebook for general announcements (anyone can see this): **facebook.com/LuxmanorPTA**

3) Join the private Luxmanor PTA Group on Facebook for detailed school/event information and community discussion. You will be approved as a member once you are identified as a current LES family:

**facebook.com/groups/LuxmanorPTAGroup** (you can also click the link for this page in the "groups" tab of the public page)

If you have any questions, or want to make any suggestions, contact us at [LuxmanorPTA@gmail.com](mailto:LuxmanorPTA@gmail.com).

Thank you,

Luxmanor PTA Board



[LuxmanorPTA@gmail.com](mailto:LuxmanorPTA@gmail.com)

LUXMANOR ELEMENTARY SCHOOL PTA

# Membership & Direct Donation Contribution Form

2020-2021

## 1 Student Information

Name \_\_\_\_\_

Teacher \_\_\_\_\_ Grade \_\_\_\_\_

Name \_\_\_\_\_

Teacher \_\_\_\_\_ Grade \_\_\_\_\_

Name \_\_\_\_\_

Teacher \_\_\_\_\_ Grade \_\_\_\_\_

## 2 Member Information

Name \_\_\_\_\_

Address \_\_\_\_\_  
\_\_\_\_\_

Email \_\_\_\_\_

Phone \_\_\_\_\_ Home Work Cell

Additional Member Name \_\_\_\_\_

Phone \_\_\_\_\_ Home Work Cell

## 3 Membership Options

### PTA Membership - \$25

Membership includes PTA calendar, Luxmanor directory and directory app.

### Additional family member - \$10

A spouse, for example.

### Additional directory - \$5

## 4 Payment Information

Membership total (Step 3) ..... \$ \_\_\_\_\_

### Return this form to:

Luxmanor Elementary School - PTA

6701 Tilden Lane

Rockville, MD 20852

Direct Donation Contribution ..... + \_\_\_\_\_

(\$50 suggested, any amount appreciated)

**Total** = \_\_\_\_\_

**Note:** If you would like to join the PTA and dues are a hardship, please pay what you can.

Cash Check # \_\_\_\_\_

*Please make checks payable to Luxmanor PTA.*

**ATTENTION TEACHERS** - As a token of our appreciation, the PTA will pay your dues for the year.

Date form received: \_\_\_\_\_

\*If you wish to pay electronically, please go to: [www.bit.ly/LuxmanorPTAMembership21-22](http://www.bit.ly/LuxmanorPTAMembership21-22)