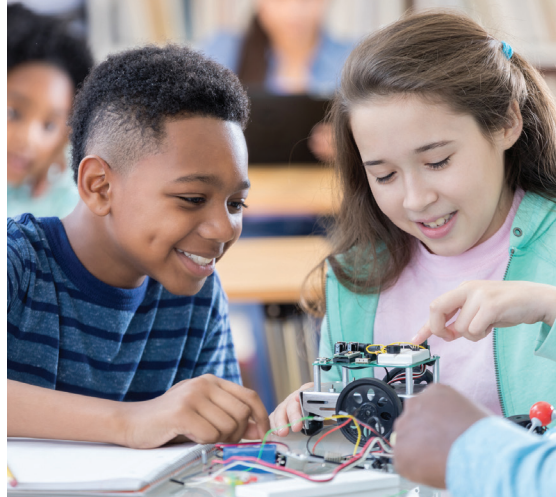


When School's Out ★ We're On



Welcome, Montgomery County Families!

Before & After School for K - 6th Grade
2021/2022

LOCATIONS:

Glen Haven Elementary, Sargent Shriver Elementary, Parkland Magnet Middle School



For hours, rates, and to register online:
www.alphabest.org/montgomerycountymd

Our program meets the needs of today's families. We give all students a place where they feel connected, can decompress from a long day of learning, and have a blast while experiencing quality daily enrichment activities not found in other after school settings.



Scan me



Snacks
Daily Fitness Activities

Art, Robotics, Coding, Drama,
Sign Language,
World Languages & Culture,
Homework Help and much more!

Quality caring staff who
love our students!
Flexible schedules to meet the
needs of today's working parents.

Area Manager: Chandel Burns **Contact: cburns@alphabest.org**

INSPIRE ENGAGE DISCOVER LEARN
INSPIRE ENGAGE DISCOVER LEARN
INSPIRE ENGAGE DISCOVER LEARN