



Welcome to 4th Grade
Back to School Night!!

Mrs. Bleistein, Mrs. Abercrombie,
Ms. Muehl



Please sign in!

Important Classroom Information

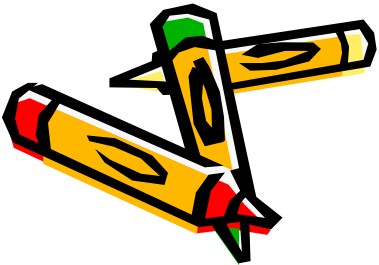


Student Daily Planner

- Homework written daily & taken home
(please check your child's daily planner nightly)

Behavior Management in the Classroom

- PBIS - Respectful, Responsible and Safe
- Paw Points and School Store
- Calm Down Corner/Reflection Sheets



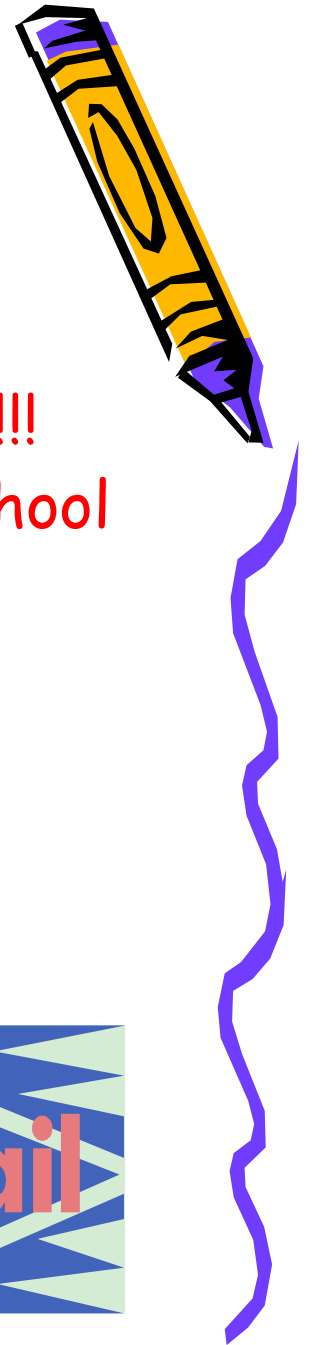
Communication

- Parent - Teacher Communication is Important!!!
Contact each 4th grade teacher via **e-mail**, **school phone**, or **note**. Please give us 24 hours to respond.

[Cynthia J Bleistein@mcpsmd.org](mailto:Cynthia_J_Bleistein@mcpsmd.org)

[Sarah K Abercrombie@mcpsmd.org](mailto:Sarah_K_Abercrombie@mcpsmd.org)

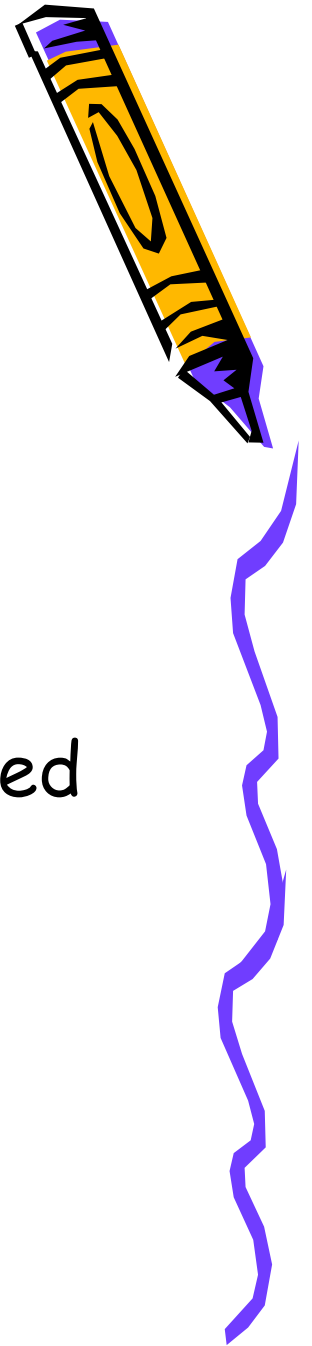
[Angela M Muehl@mcpsmd.org](mailto:Angela_M_Muehl@mcpsmd.org)



Communication

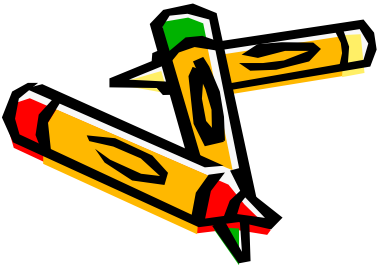
- **Red Folders**

- Go home on Wednesday
- Send back to school Thursday
- Parents will need to go through the red folder on Wednesday night
- Students should return any forms to their teacher on Thursday morning.



Communication

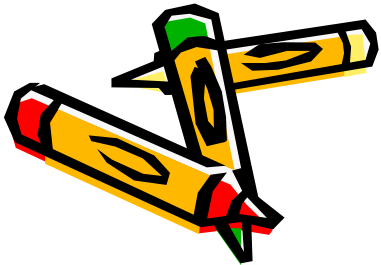
- Take Home Folders
 - Check nightly
 - Send in a note when your child is going home a different way
 - Nightly Homework





Reading

New Curriculum: Benchmark Advance



NUMBER AND OPERATIONS – FRACTIONS

Add and Subtract Fractions
Multiplying Fraction by a whole number

MEASUREMENT AND DATA

Time
Length
Capacity
Line Plot

OPERATIONS ALGEBRAIC THINKING

Multi-Step Problems
four operations
drawings
equations
unknowns in all positions
Estimation

Patterns in numbers
-factors, arrays, recognizing patterns, applying concepts in problem solving situations

NUMBER AND OPERATIONS IN BASE TEN

Fluently Add and Subtract Within 1,00,000
place value strategies

properties of operations
relationship between addition and subtraction

Multiply Multi Digit Numbers by a 1 digit number and 2 digit by 2 digit

$$452 \times 7$$

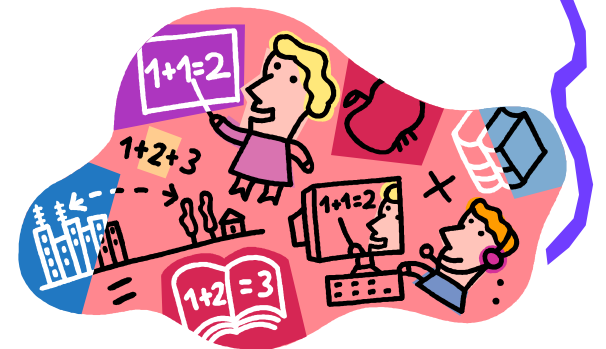
$$20 \times 20$$

$$25 \times 25$$

Math

Math

- Exit Cards
- Math journals
- ***Important** that they know all of their basic math facts! (subtraction, addition, division, and multiplication)
- Homework: Due Friday

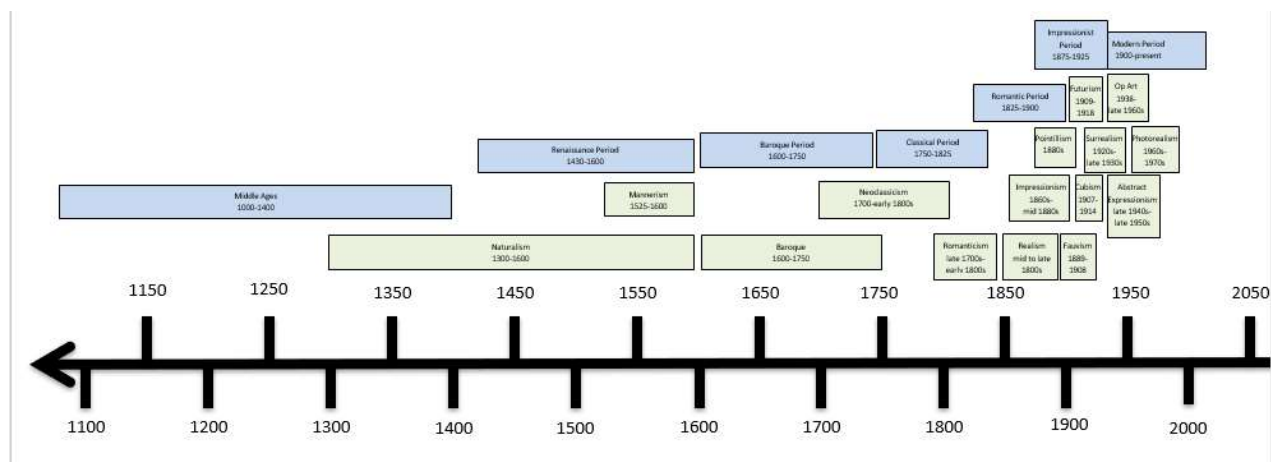


Social Studies

- **Social Studies:**
- Q1
- Native Americans of North America:
 - Great Plains, Southwest Desert, Pacific Northwest



Timeline of Historical Events



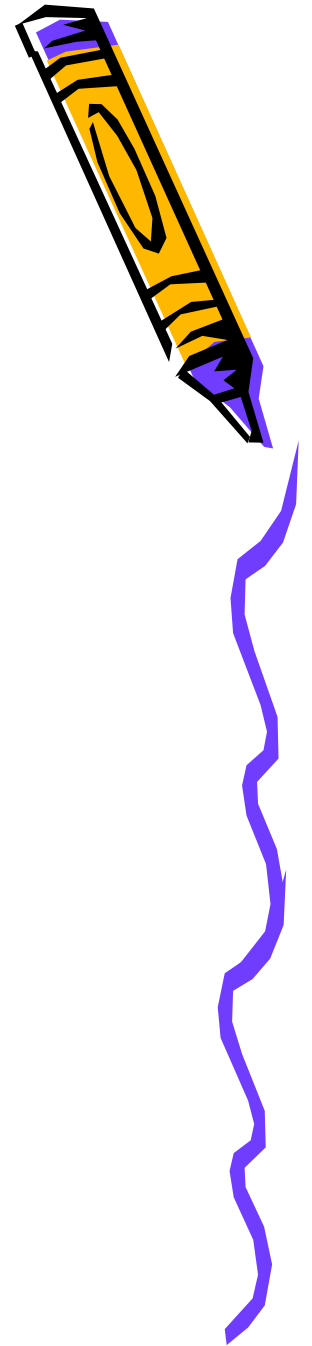
Science

- Energy

Recycled Materials

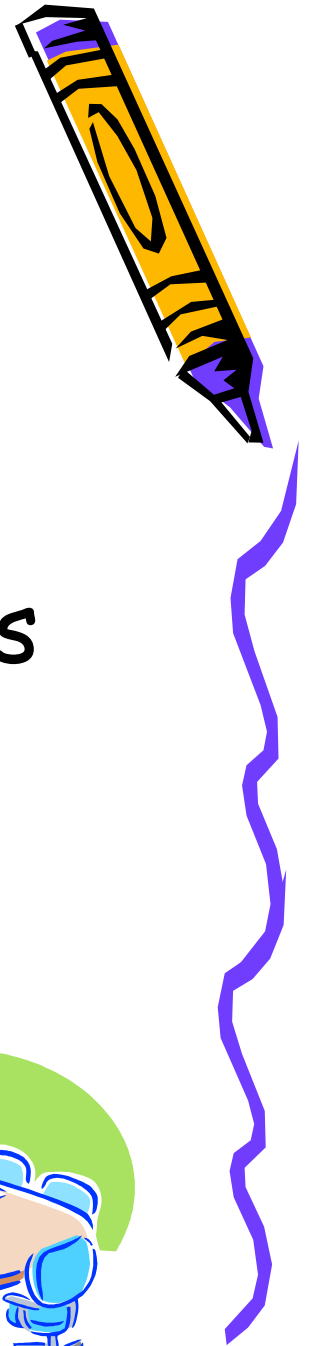
Save materials for Lessons in this Unit

- Sound Energy: Toilet and paper towel rolls
- Light Energy: Cardboard (small squares ≤ 1 square foot)
- Heat or Thermal Energy: Lunch trays from the cafeteria (12)
- Solar Ovens: Clean (no food or grease) pizza boxes (begin collecting early in the year, Recommend at least 6 per class)
- Solar Ovens: newspaper



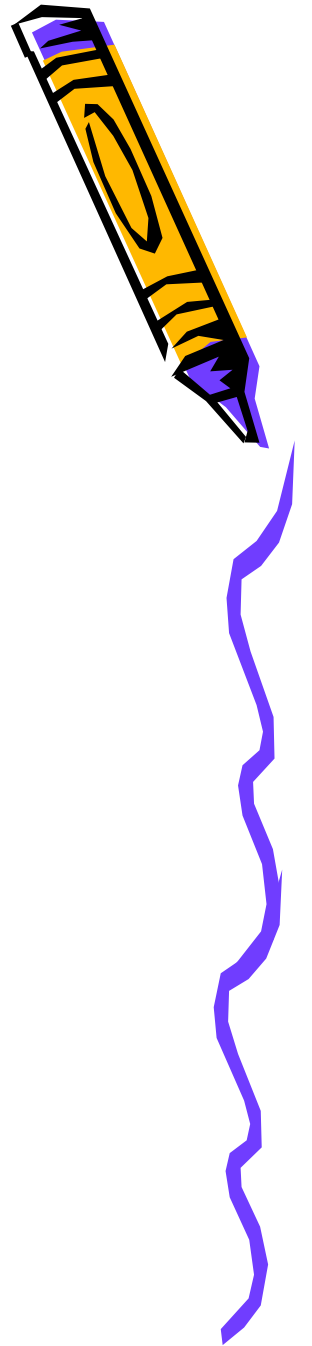
Conferences

- November 11 and 12
- Both days are early release days for students.



Chrome Books

- Contracts
- Ear buds/headphones



Questions and Closing



- Connect Eds. are being sent every Sunday night. If you aren't receiving yours, contact the office to update your telephone information.
- Thank you for coming!

