



Dumpster Locking Information



See this picture of properly locked recycling dumpsters

Note: All dumpsters are locked with lids closed and gravity locking bar in the closed position. Locks should remain on the dumpster in the locked position.

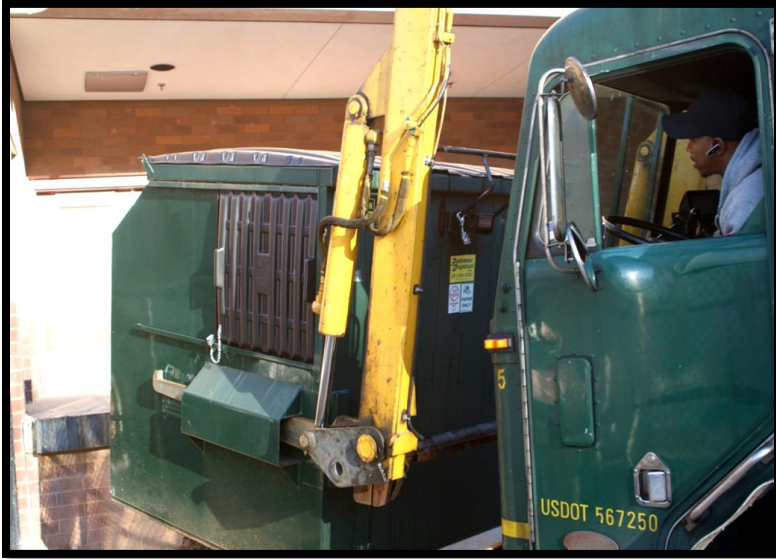


Paper recycling dumpster properly locked waiting to be serviced by recycling hauling contractor.

Note: locks are locked properly on the dumpster. Please no open dangling locks.



Dumpster Locking Information



Same paper recycling dumpster was tilted forward by truck. Notice the gravity locking bar opens automatically (through weight/gravity) even with the locks on. Remember not to remove the locks on pick-up day.



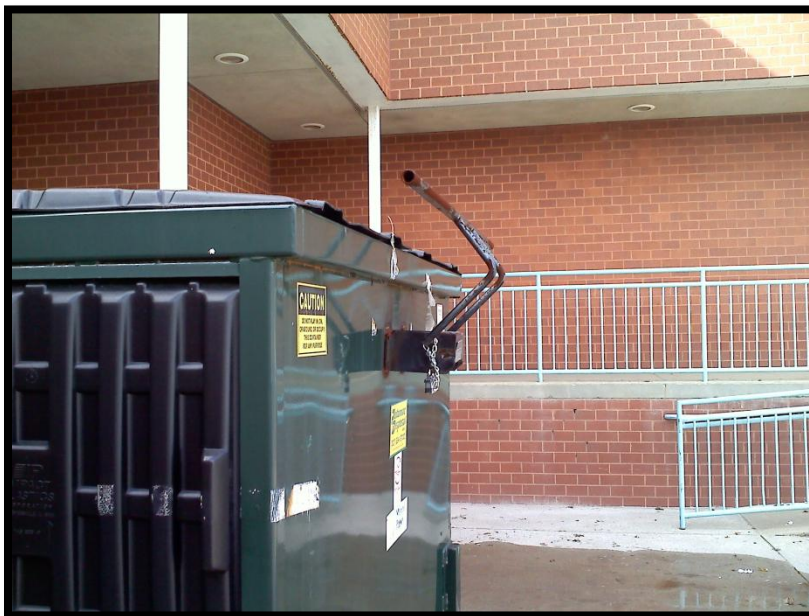
The recyclables are about to be emptied.



Dumpster Locking Information



Recyclables are weighed at each location using On-Board vehicle scale. Scale reads 2,510 pounds.



Gravity locking bar after dumpster has been emptied. Notice lock is still there! The gravity locking bar needs to be manually pushed back to the locked position. Please push the bar forward.

If you have any questions or concerns please e-mail or call SERT @ Recycling@mcpsmd.org or 240-314-1090

SERT thanks you for keeping your recycling dumpsters locked at all times.