



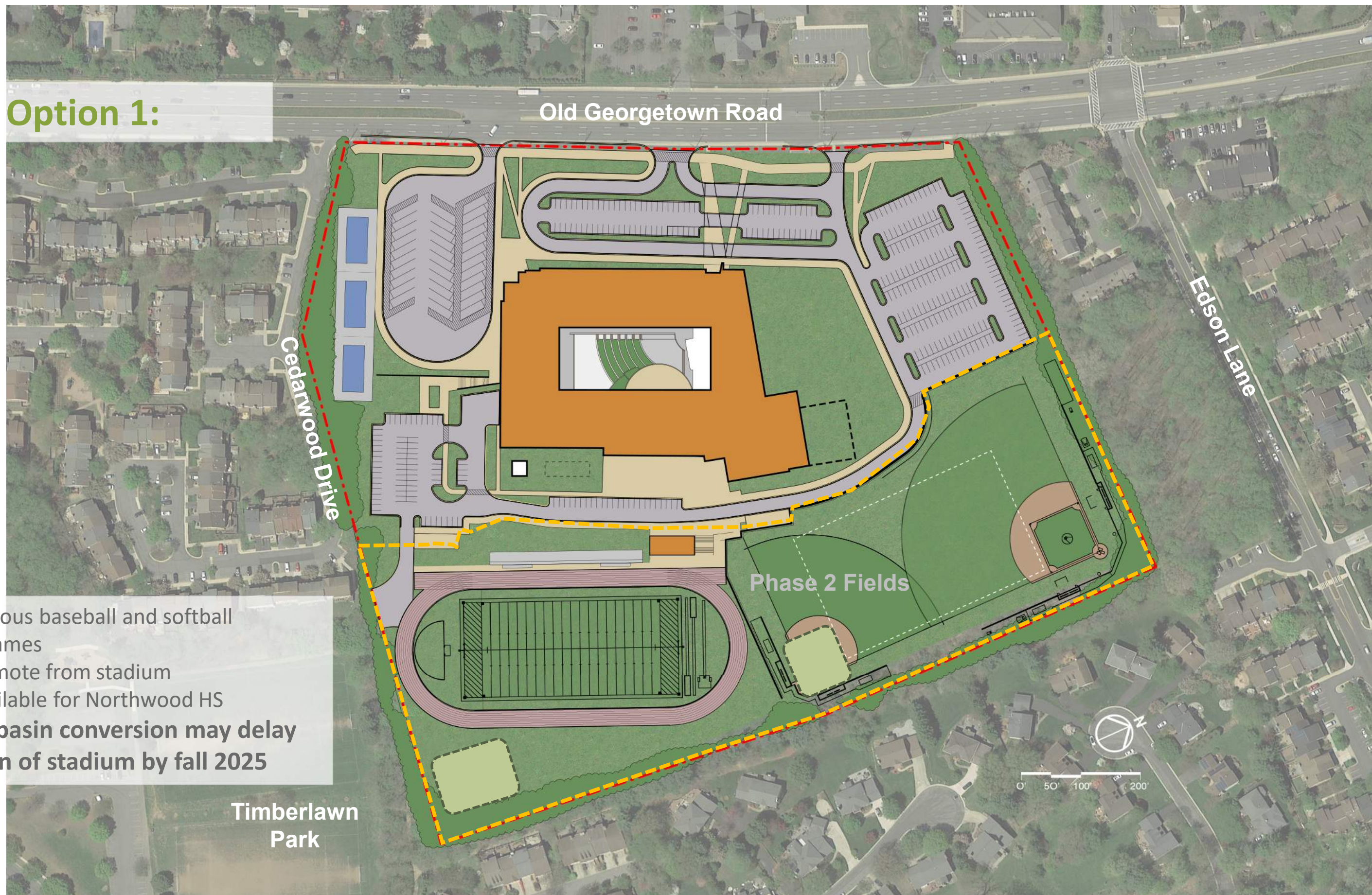
Creative Collaboration
Sustainable Solutions
Engaging Environments

WOODWARD HIGH SCHOOL

SEPTEMBER 03, 2020

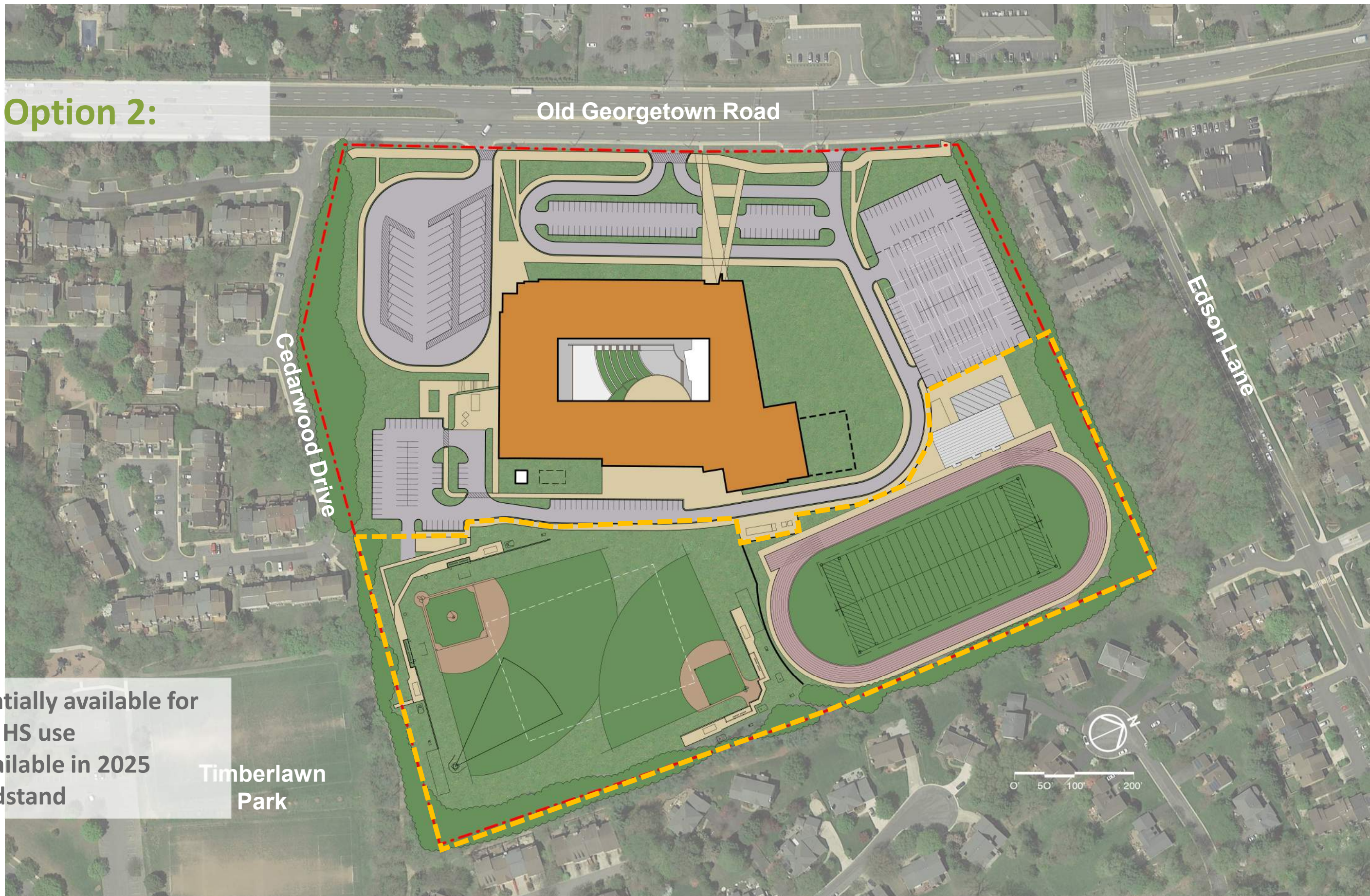


Site Plan Option 1:



- No simultaneous baseball and softball practice or games
- Parking is remote from stadium
- No fields available for Northwood HS
- **Sediment basin conversion may delay completion of stadium by fall 2025**

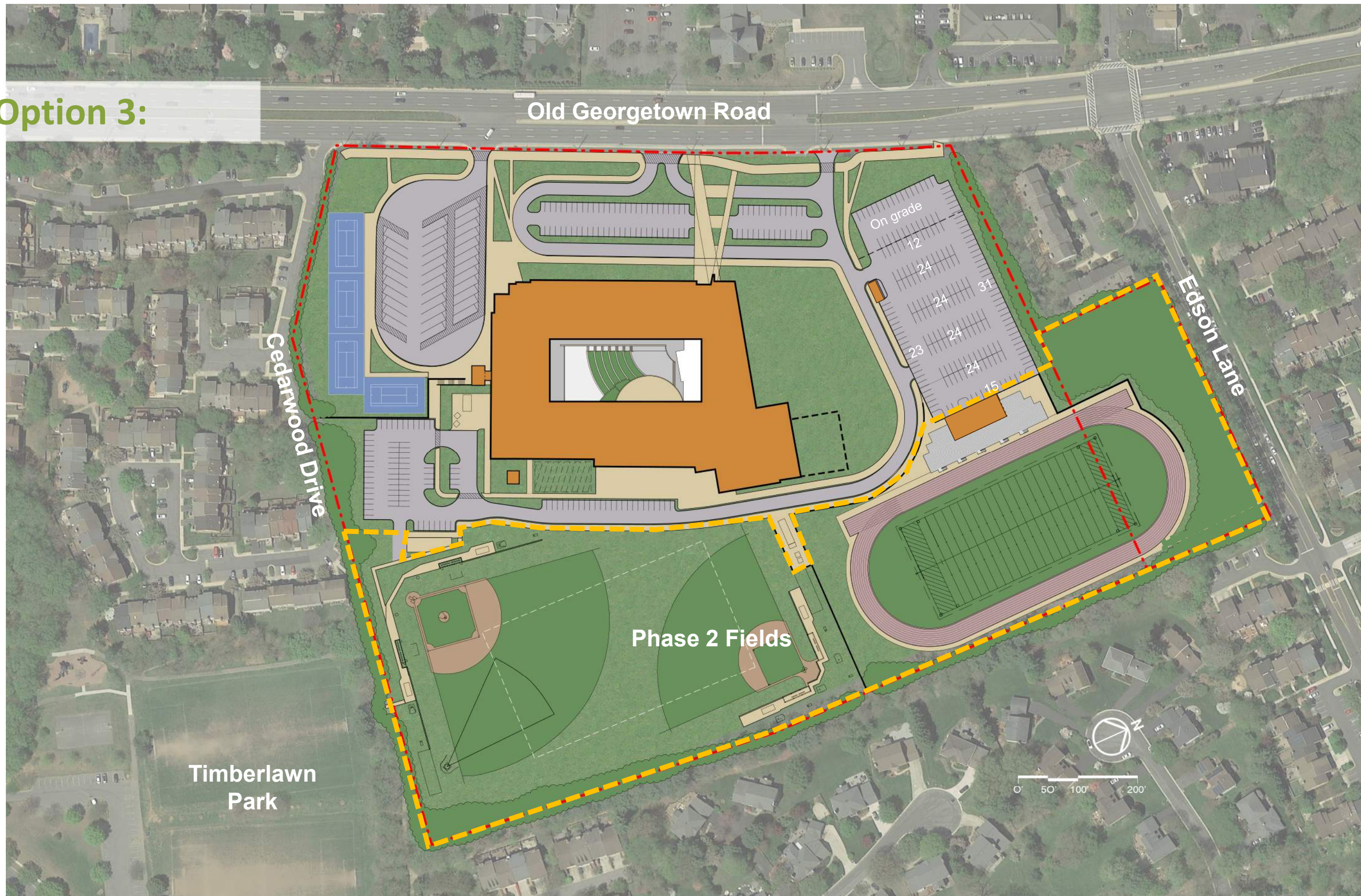
Site Plan Option 2:



- Fields potentially available for Northwood HS use
- Stadium available in 2025
- Offset grandstand

Timberlawn
Park

Site Plan Option 3:



QUESTIONS?
THANK YOU!