

**MONTGOMERY
COUNTY PUBLIC
SCHOOLS
RONALD MCNAIR
ELEMENTARY
SCHOOL**

**COMMUNITY
MEETING #2**

April 13, 2021



PRESENTATION FORMAT & GUIDELINES

OPEN FORMAT PRESENTATION

- MEETING IS BEING RECORDED
- QUESTIONS IN CHAT WINDOW
- WILL RESPOND TO QUESTIONS AT THE END OF EACH AGENDA ITEM

INTRODUCTIONS

RONALD MCNAIR ELEMENTARY SCHOOL

- SHERILYN MOSES, PRINCIPAL
- RANDY ALESHEVICH, VICE PRINCIPAL

MONTGOMERY COUNTY PUBLIC SCHOOLS – CAPITAL PLANNING / DESIGN & CONSTRUCTION

- DENNIS CROSS, MCPS FACILITIES MANAGER, PROJECT MANAGEMENT
- JOE DEROSA, MCPS PROJECT MANAGER & FACILITIES DESIGNER
- DJ CONNELLY, MCPS PLANNER II

WALDON STUDIO ARCHITECTS

- CHRISTA KERRIGAN, PRINCIPAL & PROJECT MANAGER
- LINDA GILBERT, PROJECT ARCHITECT

AGENDA

1. TODAY'S MEETING GOALS & PROJECT OVERVIEW
2. PROJECT SCHEDULE
3. RONALD MCNAIR ELEMENTARY SCHOOL - EXISTING SITE FEATURES
4. RONALD MCNAIR ELEMENTARY SCHOOL - EXISTING BUILDING FEATURES & FLOOR PLANS
5. EDUCATIONAL SPECIFICATIONS FOR THE NEW ADDITION
6. PRESENTATION OF OPTIONS
 1. PRESENTATION OF OPTION #1
 2. Q&A
 3. PRESENTATION OF OPTION #2
 4. Q&A
 5. PRESENTATION OF OPTION #3
 6. Q&A
7. SUMMARY OF OPTIONS & CONCLUDING THOUGHTS

TODAY'S MEETING GOALS

- REVIEW THE DESIGN OPTIONS
- COLLECT FEEDBACK ON EACH OPTION, UNDERSTAND PROS & CONS
- MCPS- DIVISION OF DESIGN AND CONSTRUCTION GOAL FOR TONIGHT'S MEETING IS TO COME TO A CONSENSUS ON ONE OF THE SCHEMATIC DESIGN OPTIONS, SO THAT THE DESIGN CONSULTANT, WALDON STUDIOS ARCHITECTS, CAN MOVE FORWARD WITH THAT SELECTED SCHEMATIC DESIGN OPTION, INTO THE NEXT DESIGN PHASE.

PROJECT OVERVIEW

- NEW ADDITION & RENOVATION TO ACCOMMODATE MORE CLASSROOMS AND SUPPORT SPACES
- EVENTUAL ELIMINATION OF THE PORTABLE CLASSROOMS ONCE THE NEW ADDITION IS COMPLETE
- MECHANICAL / HVAC RENOVATION WILL ALSO TAKE PLACE IN CONJUNCTION WITH THIS PROJECT

PROJECT SCHEDULE



- MECHANICAL / HVAC RENOVATION TENTATIVELY SCHEDULED FOR THE SUMMER OF 2022
- RELOCATION OF THE PORTABLE CLASSROOMS COULD OCCUR DURING THE SUMMER OF 2021 DEPENDING ON THE SELECTED DESIGN OPTION
- VARIOUS OTHER STAGES OF RENOVATIONS WILL BE PHASED TO HAVE MINIMAL IMPACT ON LEARNING & SCHOOL ACTIVITIES

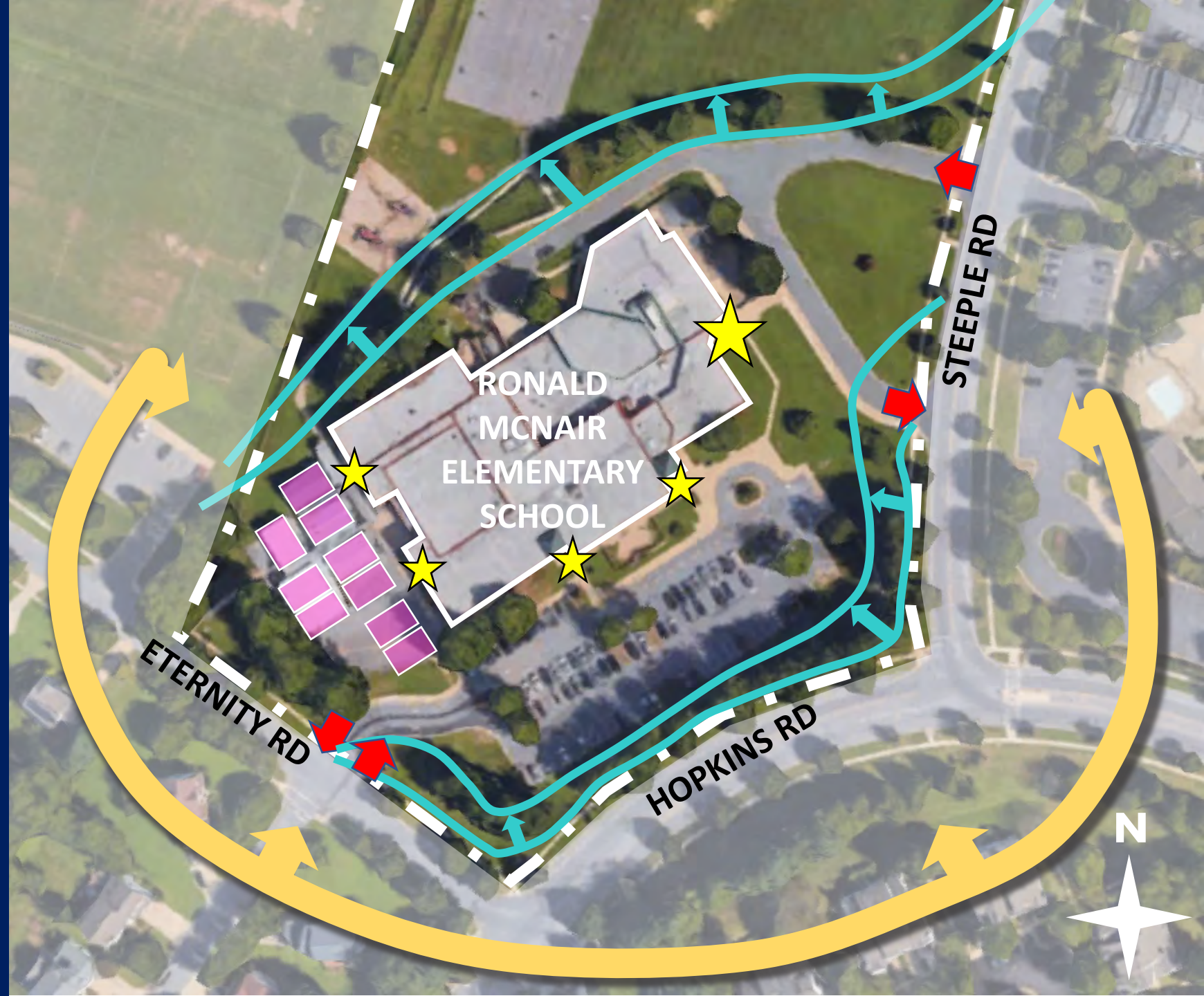
EXISTING SITE

- 9.8 ACRES
- 92 PARKING SPACES;
SEPARATE BUS & CAR
DROP OFFS
- SMALL SEMI-CIRCULAR
DROP OFF AT MAIN
ENTRANCE NOT USED
- WALKERS COMING FROM
RESIDENTIAL
NEIGHBORHOODS ON ALL
SIDES OF SITE
- STUDENTS ENTERING THE
BUILDING FROM 3 SIDES
AT MULTIPLE ENTRANCES



SITE FEATURES

- MAJOR SITE SLOPE ON THE NORTH OF THE SITE
- CURRENT STORMWATER MANAGEMENT IS ORIGINAL TO THE SCHOOL
- WATER SERVICE ENTERS THE BUILDING FROM STEEPLE ROAD
- 9 EXISTING PORTABLE CLASSROOMS



EXISTING BUILDING SOUTH SIDE



EXISTING BUILDING NORTHEAST SIDE



EXISTING BUILDING SOUTHEAST SIDE



EXISTING BUILDING WEST SIDE



PROJECT EDUCATIONAL SPECIFICATIONS

- Student Capacity 797, with core of 740 students
- Project budget approximately \$8.6M
- Around 6,000 SF classroom space
- Around 3,000 SF support space

SPACE	QUANTITY	SIZE	TOTAL NET
CLASSROOMS			
PRE-K	1	1,300 SF	1,300 SF
KINDERGARTEN	1	1,300 SF	1,300 SF
CLASSROOMS	4	840 SF	3,360 SF
SUPPORT ROOMS			
LARGE INSTRUCTIONAL ROOM	1	600 SF	600 SF
SMALL INSTRUCTIONAL ROOM	1	450 SF	450 SF
SUPPORT STAFF OFFICE	1	125 SF	125 SF
TESTING ROOM	1	125 SF	125 SF
PERSONAL CARE ROOM	1	100 SF	100 SF
ADMINISTRATION			
OT / PT	1	250 SF	250 SF
PRIVACY ROOM (MULTI-USE)	1	50 SF	50 SF
STAFF DEVELOPMENT AREA			
STAFF DEVELOPMENT OFFICE	1	100 SF	100 SF
READING SPECIALIST OFFICE	1	100 SF	100 SF
CONFERENCE / TRAINING RM	1	400 SF	400 SF
BUILDING SERVICE FACILITIES			
GENERAL STORAGE	1	240 SF	240 SF
BUILDING SERVICES OUTDOOR STORAGE	1	250 SF	250 SF
TOTAL			8,750 SF

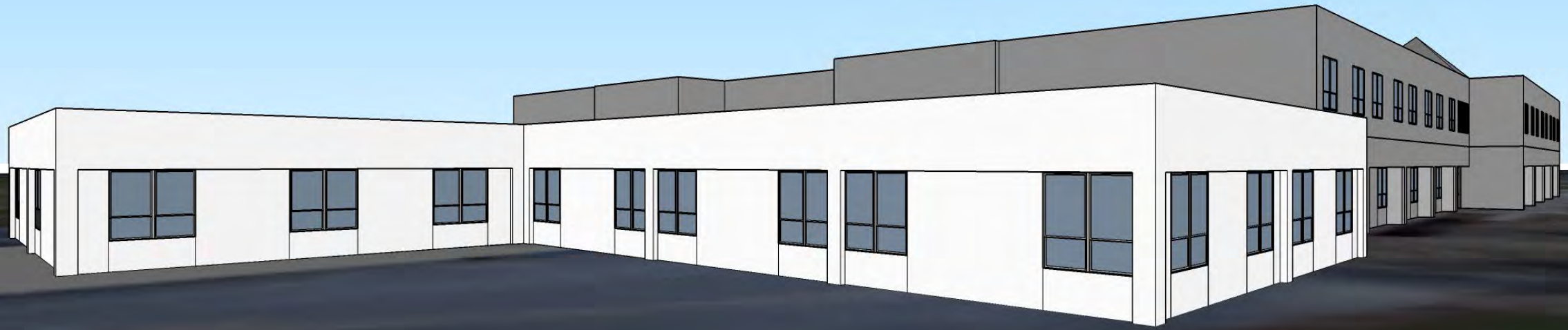
OPTION #1: 3D MASSING CONCEPT



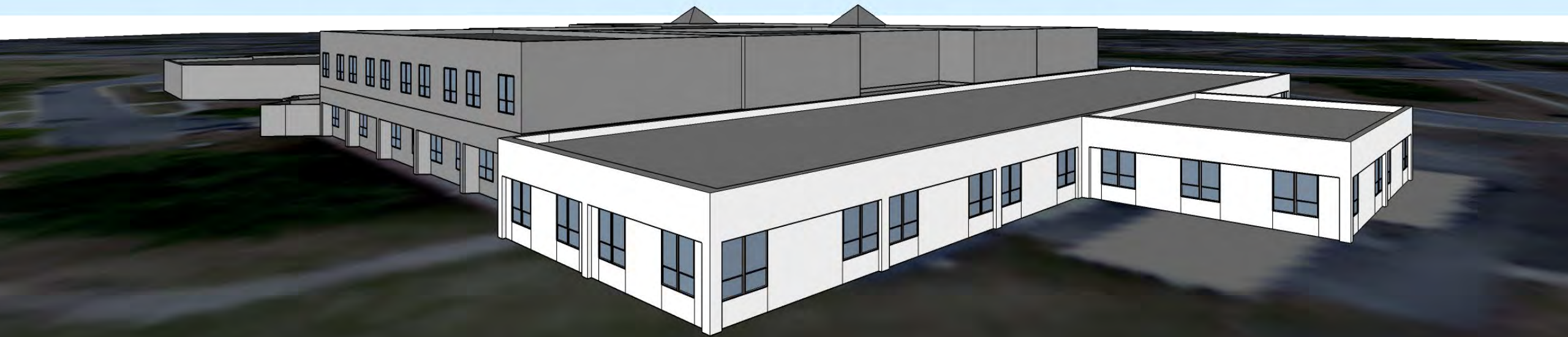
OPTION #1: 3D MASSING CONCEPT



OPTION #1: 3D MASSING CONCEPT



OPTION #1: 3D MASSING CONCEPT

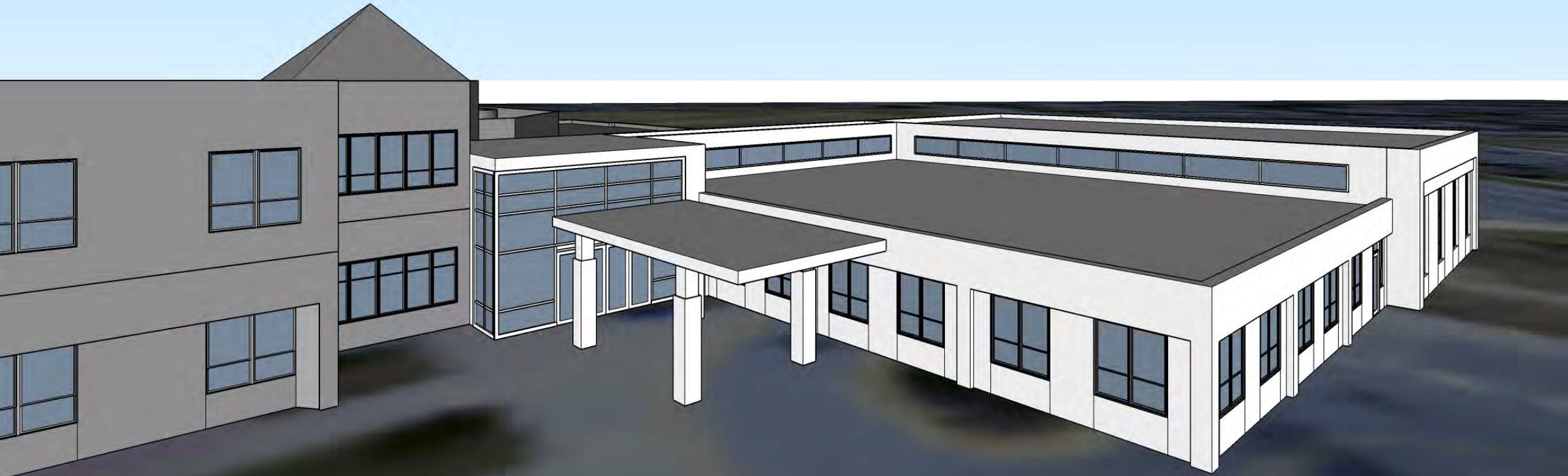


QUESTIONS?

OPTION #2: 3D MASSING CONCEPT



OPTION #2: 3D MASSING CONCEPT



OPTION #2: 3D MASSING CONCEPT



OPTION #2: 3D MASSING CONCEPT



QUESTIONS?

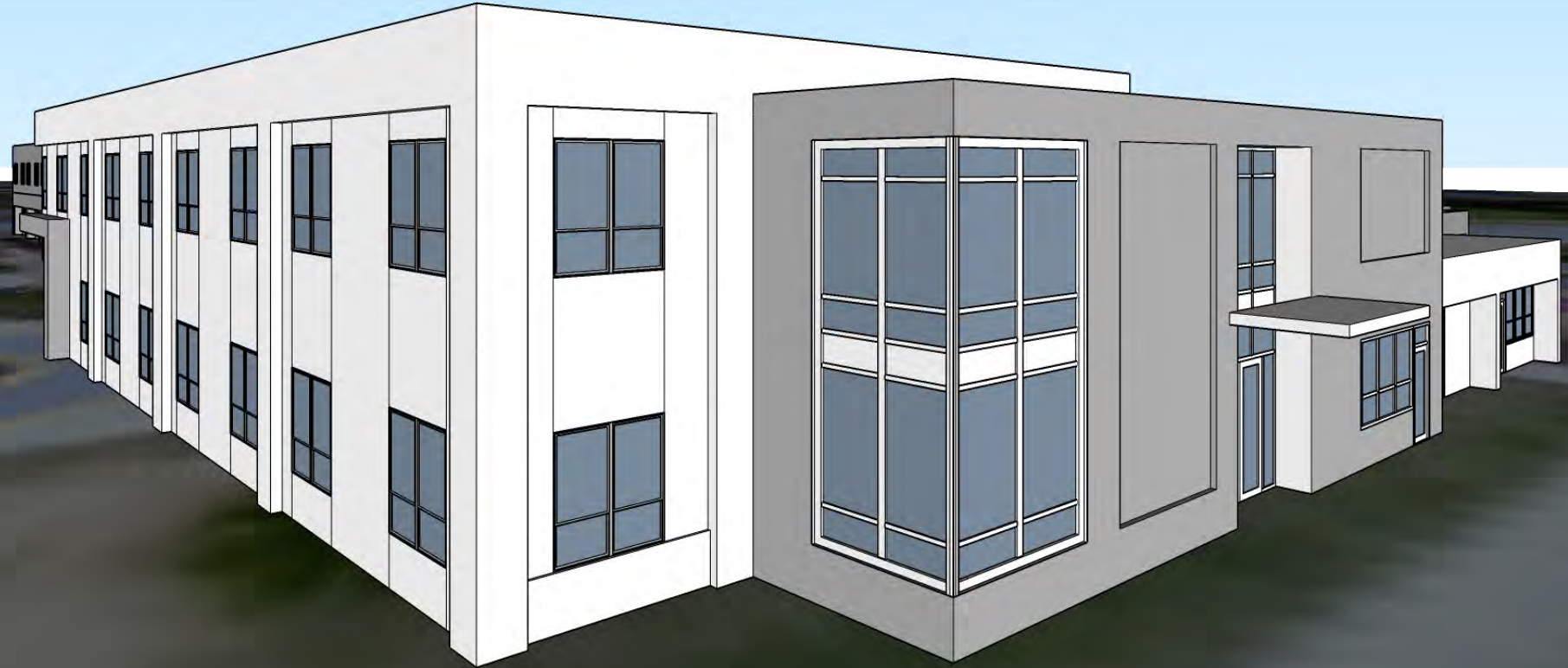
OPTION #3: 3D MASSING CONCEPT



OPTION #3: 3D MASSING CONCEPT



OPTION #3: 3D MASSING CONCEPT



OPTION #3: 3D MASSING CONCEPT



QUESTIONS?