

**MONTGOMERY
COUNTY PUBLIC
SCHOOLS
RONALD MCNAIR
ELEMENTARY
SCHOOL**

**COMMUNITY
MEETING #1**

MARCH 24, 2021



PRESENTATION FORMAT & GUIDELINES

OPEN FORMAT PRESENTATION

- MEETING IS BEING RECORDED
- QUESTIONS IN CHAT WINDOW
- WILL RESPOND TO QUESTIONS AT THE END OF EACH AGENDA ITEM

INTRODUCTIONS

RONALD MCNAIR ELEMENTARY SCHOOL

- SHERILYN MOSES, PRINCIPAL
- RANDY ALESHEVICH, VICE PRINCIPAL

MONTGOMERY COUNTY PUBLIC SCHOOLS – CAPITAL PLANNING / DESIGN & CONSTRUCTION

- DENNIS CROSS, MCPS FACILITIES MANAGER, PROJECT MANAGEMENT
- JOE DEROSA, MCPS PROJECT MANAGER & FACILITIES DESIGNER
- DJ CONNELLY, MCPS PLANNER II

WALDON STUDIO ARCHITECTS

- CHRISTA KERRIGAN, PRINCIPAL & PROJECT MANAGER
- LINDA GILBERT, PROJECT ARCHITECT
- JOE BOWMAN, PROJECT DESIGNER

AGENDA

1. TODAY'S MEETING GOALS & PROJECT OVERVIEW
2. PROJECT SCHEDULE
3. RONALD MCNAIR ELEMENTARY SCHOOL - EXISTING SITE FEATURES
4. RONALD MCNAIR ELEMENTARY SCHOOL - EXISTING BUILDING FEATURES & FLOOR PLANS
5. EDUCATIONAL SPECIFICATIONS FOR THE NEW ADDITION
6. PRESENTATION OF OPTIONS
 1. PRESENTATION OF OPTION #1
 2. Q&A
 3. PRESENTATION OF OPTION #2
 4. Q&A
 5. PRESENTATION OF OPTION #3
 6. Q&A
7. SUMMARY OF OPTIONS & CONCLUDING THOUGHTS

TODAY'S MEETING GOALS

- REVIEW THE DESIGN OPTIONS
- COLLECT FEEDBACK ON EACH OPTION, UNDERSTAND PROS & CONS
- REVISE THE OPTIONS BASED ON FEEDBACK, PRESENT REVISED OPTIONS AT NEXT COMMUNITY MEETING IN APRIL

PROJECT OVERVIEW

- NEW ADDITION & RENOVATION TO ACCOMMODATE MORE CLASSROOMS AND SUPPORT SPACES
- EVENTUAL ELIMINATION OF THE PORTABLE CLASSROOMS ONCE THE NEW ADDITION IS COMPLETE
- MECHANICAL / HVAC RENOVATION WILL ALSO TAKE PLACE IN CONJUNCTION WITH THIS PROJECT

PROJECT SCHEDULE



- MECHANICAL / HVAC RENOVATION TENTATIVELY SCHEDULED FOR THE SUMMER OF 2022
- RELOCATION OF THE PORTABLE CLASSROOMS COULD OCCUR DURING THE SUMMER OF 2021 DEPENDING ON THE SELECTED DESIGN OPTION
- VARIOUS OTHER STAGES OF RENOVATIONS WILL BE PHASED TO HAVE MINIMAL IMPACT ON LEARNING & SCHOOL ACTIVITIES

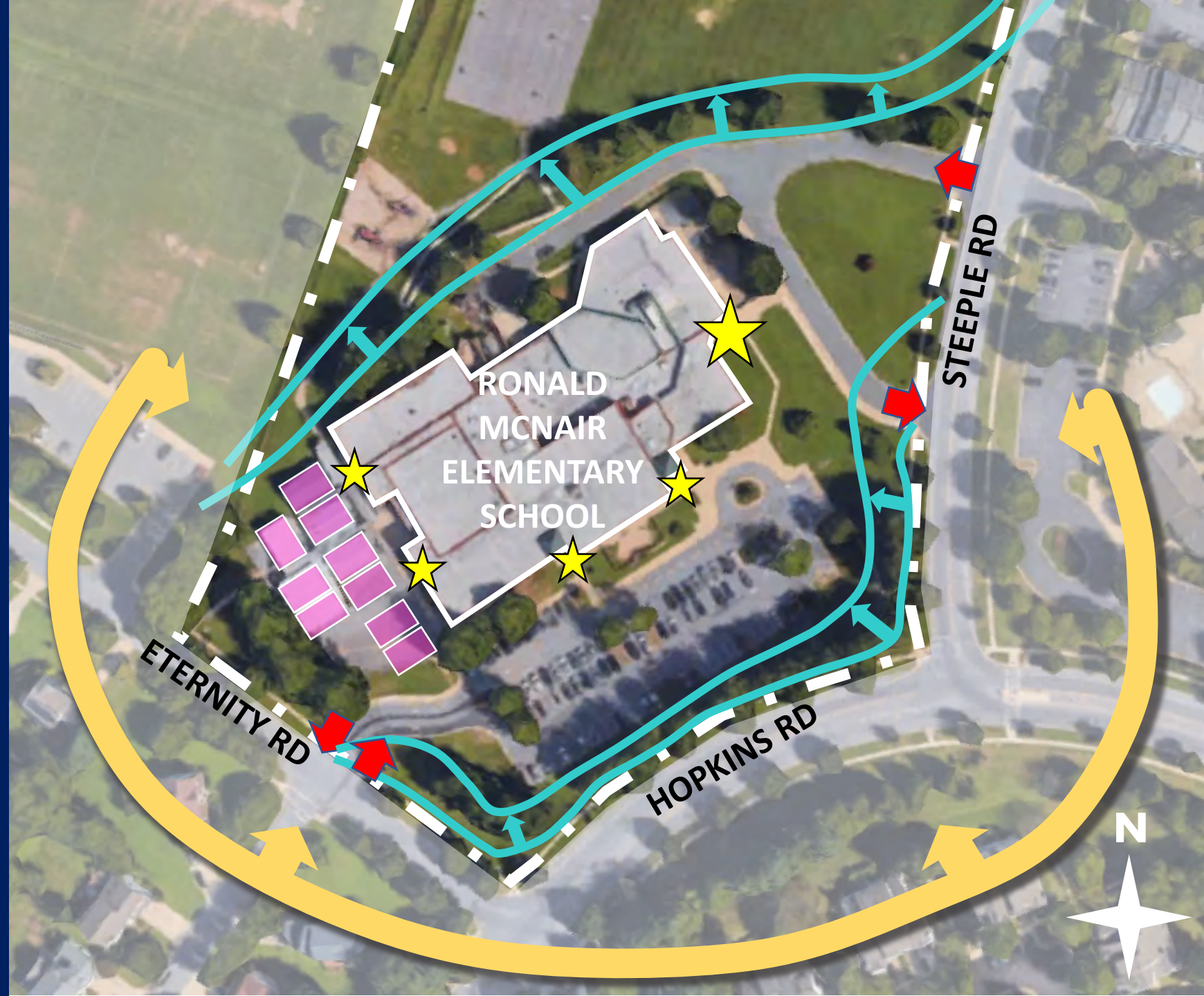
EXISTING SITE

- 9.8 ACRES
- 92 PARKING SPACES;
SEPARATE BUS & CAR
DROP OFFS
- SMALL SEMI-CIRCULAR
DROP OFF AT MAIN
ENTRANCE NOT USED
- WALKERS COMING FROM
RESIDENTIAL
NEIGHBORHOODS ON ALL
SIDES OF SITE
- STUDENTS ENTERING THE
BUILDING FROM 3 SIDES
AT MULTIPLE ENTRANCES



SITE FEATURES

- MAJOR SITE SLOPE ON THE NORTH OF THE SITE
- CURRENT STORMWATER MANAGEMENT IS ORIGINAL TO THE SCHOOL
- WATER SERVICE ENTERS THE BUILDING FROM STEEPLE ROAD
- 9 EXISTING PORTABLE CLASSROOMS



EXISTING BUILDING SOUTH SIDE



**EXISTING BUILDING
NORTHEAST SIDE**



EXISTING BUILDING SOUTHEAST SIDE



EXISTING BUILDING WEST SIDE



PROJECT EDUCATIONAL SPECIFICATIONS

- Student Capacity 797, with core of 740 students
- Project budget approximately \$8.6M
- Around 6,000 SF classroom space
- Around 3,000 SF support space

SPACE	QUANTITY	SIZE	TOTAL NET
CLASSROOMS			
PRE-K	1	1,300 SF	1,300 SF
KINDERGARTEN	1	1,300 SF	1,300 SF
CLASSROOMS	4	840 SF	3,360 SF
SUPPORT ROOMS			
LARGE INSTRUCTIONAL ROOM	1	600 SF	600 SF
SMALL INSTRUCTIONAL ROOM	1	450 SF	450 SF
SUPPORT STAFF OFFICE	1	125 SF	125 SF
TESTING ROOM	1	125 SF	125 SF
PERSONAL CARE ROOM	1	100 SF	100 SF
ADMINISTRATION			
OT / PT	1	250 SF	250 SF
PRIVACY ROOM (MULTI-USE)	1	50 SF	50 SF
STAFF DEVELOPMENT AREA			
STAFF DEVELOPMENT OFFICE	1	100 SF	100 SF
READING SPECIALIST OFFICE	1	100 SF	100 SF
CONFERENCE / TRAINING RM	1	400 SF	400 SF
BUILDING SERVICE FACILITIES			
GENERAL STORAGE	1	240 SF	240 SF
BUILDING SERVICES OUTDOOR STORAGE	1	250 SF	250 SF
TOTAL			8,750 SF

OPTION #1: ONE-STORY ADDITION FOR KINDERGARTEN, PRE- KINDERGARTEN, & SUPPORT SPACES

- THIS OPTION IS FOR A NEW ONE-STORY ADDITION THAT WOULD HOUSE THE PRE-K AND KINDERGARTEN CLASSROOMS, AND SUPPORT SPACES
- THE PORTABLE CLASSROOMS WOULD NEED TO BE RELOCATED
- A NEW OUTDOOR PLAY AREA COULD BE PROVIDED FOR THE PRE-K AND KINDERGARTEN STUDENTS



QUESTIONS?

OPTION #2: ONE-STORY ADDITION FOR KINDERGARTEN, ART, MUSIC & SUPPORT SPACES

- THIS OPTION IS FOR A NEW ONE-STORY ADDITION THAT WOULD HOUSE KINDERGARTEN ART, MUSIC, AND SUPPORT SPACES
- ALL OF THE PORTABLE CLASSROOMS CAN STAY IN PLACE
- THE EXISTING ART, MUSIC, & DUAL PURPOSE ROOMS WOULD BE CONVERTED INTO STANDARD CLASSROOMS



QUESTIONS?

OPTION #3: TWO-STORY ADDITION FOR KINDERGARTEN, CLASSROOMS & SUPPORT SPACES

- THIS OPTION IS FOR A NEW TWO-STORY ADDITION THAT WOULD HOUSE KINDERGARTEN & SUPPORT SPACES ON THE FIRST FLOOR, AND STANDARD CLASSROOMS AND SUPPORT SPACES ON THE SECOND FLOOR
- ALL OF THE PORTABLE CLASSROOMS CAN STAY IN PLACE



QUESTIONS?